

solis
inverters

2017
V2-IN



Circuit Board
SMT Manufacture



SMT



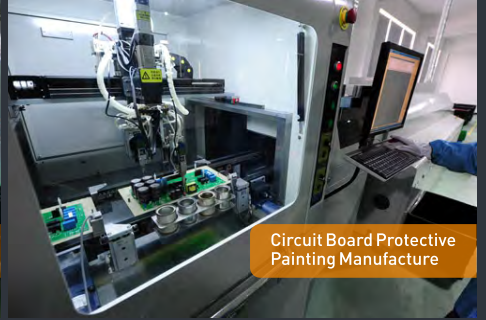
PCB testing



Wave Soldering



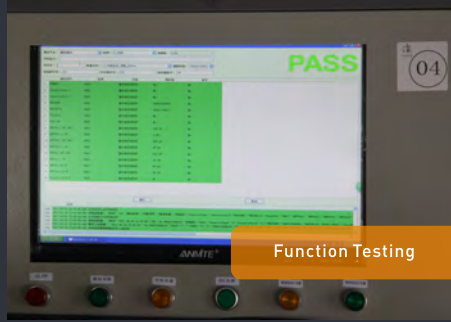
Selective Soldering



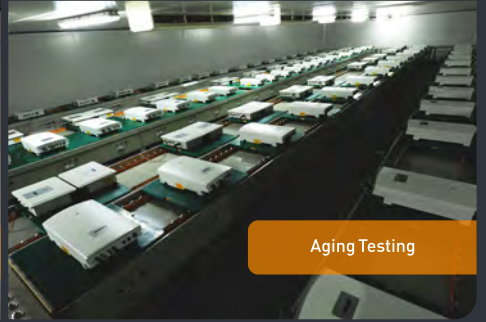
Circuit Board Protective
Painting Manufacture



Product Assembly



Function Testing



Aging Testing



Ginlong Manufacturing Base

Established in 2005 - Ginlong is one of the oldest and largest string inverter manufacturers in the world

3GW Annual Production Capacity

430,000sqft Manufacturing Centre

World class R&D - 52 engineers

Solis Inverter range from 700W - 70kW

Approved Vendor Listing - Leading banks and financial institutions

3rd Party Technical Audits - DNV GL, OST, SolarIF

Company History

2003 R&D company CUK founded in Bristol, UK - 3 Engineers

2005 Ginlong company officially established in Ningbo, China. Ginlong inverter certified to CE

2006 Ginlong inverter was the second inverter certified to UK G83 certification

2009 First Asian inverter to achieve USA UL1741 certification.
PV inverters delivered to AGL - Top 3 Australian utility company.

2010 Ginlong inverter was the second Asian inverter certified to AS4777/AS 3100

2013 IEC61400-2 annual meeting was mainly held by Ginlong

2015 Ginlong inverter installed on Eiffel Tower in Paris

2015 No 1 inverter sales for distributed PV in UK

2015 Top 12 inverter sales in Europe

2015 Top 5 PV string inverter sales in USA

2015&2016 Top 3 PV string inverter brand value in China

2016 To be listed Asia PV innovation company

2016 Awarded as the Best Distributed Inverter Brand

2016&2017 Top 3 energy storage inverter supplier in China

2016&2017 Ginlong awarded TOP BRAND PV by EuPD Research

2017 Ginlong got the APVIA Technology Achievement Award

100% components from the world's leading brands

Capacitor, Inductor



nichicon

NCC株式会社



YAGEO

Connector, Switching device



wieland

ZETTLER



santon

OMRON

JST

Materials, IC category



TEXAS
INSTRUMENTS



A.Schulman



RAMPF
discover the future



VISHAY

AVAGO
TECHNOLOGIES



3M
Science.
Applied to Life.™

Power device, Sensor



MAGTRON

CREE



SiTime™



ON Semiconductor

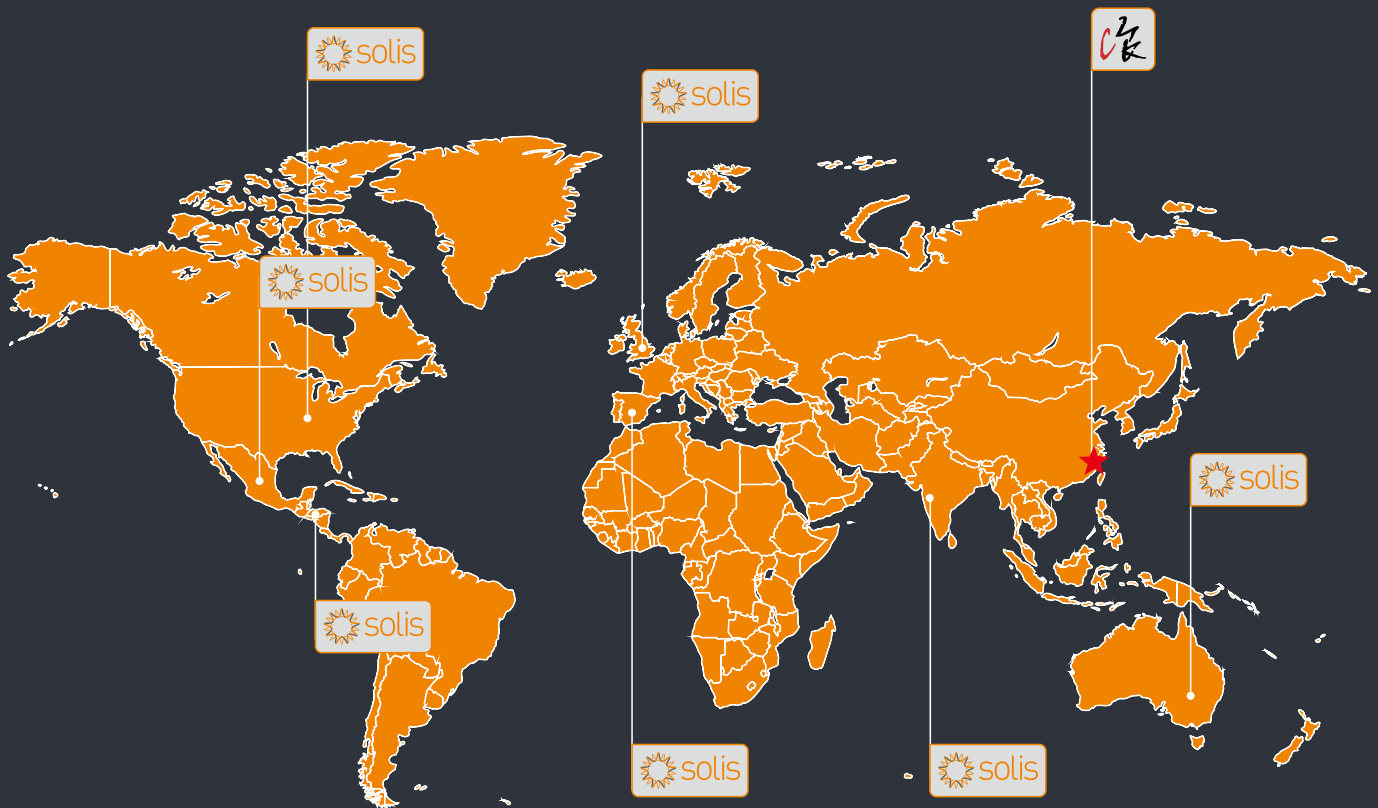


molex

intersil
A Renesas Company

ebmpapst

Service system



Global service network

- ▶ America
- ▶ Costa Rica
- ▶ Spain
- ▶ Australia
- ▶ UK
- ▶ India
- ▶ Mexico
- ▶ China

Service

- ▶ Unmatched experience across 60+ countries
- ▶ High reliability and low service frequencies
- ▶ Limited time to ensure fast service
- ▶ Local service points - China, USA(2010), Australia (2010), UK (2013) ,Central America (2013), Europe (2014)

Installed On Eiffel Tower





CONTENTS

■ Solis Mini Series Inverters		1
■ Solis Single Phase Inverters		3
■ Solis Three Phase Inverters		5
■ Solis Energy Storage Inverters		11
■ Accessories		13
■ Case study		17

Mini

700W
to 2.5KW

Solis Mini Series Inverter

- ▶ 50V-400V input voltage range- ultra low startup
- ▶ Over 96.7% Max. efficiency
- ▶ Precise MPPT algorithm
- ▶ IP65 rated for external installation
- ▶ RS485, WiFi/GPRS(optional) interface
- ▶ Numerous protection functions
- ▶ WiFi monitoring available---iphone and android app available
- ▶ 5 years standard warranty, 20 years optional upgrade



Model:

Solis-mini-700

Solis-mini-1000

Solis-mini-1500

Solis-mini-2000

Solis-mini-2500

Features:

5.6kg

Weight

50V

MPPT
voltage

2X

CPU

Fanless

Cooling
Concept

WiFi/GPRS

Real time
monitoring

Available on the iPhone
App Store

Available on the Android
App Store

Datasheet

Model	Solis-mini-700	Solis-mini-1000	Solis-mini-1500	Solis-mini-2000	Solis-mini-2500
Energy Source	PV				
Input Side(DC)					
Max. DC input power(kW)	0.9	1.2	1.8	2.4	3
Max. DC input voltage(V)	450			500	
Start-up voltage(V)	60				
MPPT voltage range(V)	50-400				
Max. input current(A)	10A				
MPPT number/Max input strings number	1/1				
Output Side (AC)					
Rated output power(kW)	0.7	1	1.5	2	2.5
Max. apparent output power(kVA)	0.8	1.1	1.65	2.2	2.5
Max. output power(kW)	0.8	1.1	1.65	2.2	2.5
Rated grid voltage(V)	230				
Grid voltage range(V)	180-270				
Rated grid frequency(Hz)	50/60				
Operation phase	Single				
Rated grid output current(A)	3	4,3	6,5	8,7	10,9
Max. output current(A)	4.4	6.1	9.2	12.2	13.9
Power Factor (at rated output power)	>0.99				
THDi (at rated output power)	<3%				
DC injection current(mA)	<20				
Grid frequency range(Hz)	47-52 or 57-62				
Efficiency					
Max. efficiency	96.7%				
EU efficiency	96.2%				
MPP Tefficiency	>99%				
Protection					
DC reverse-polarity protection	Yes				
Short circuit protection	Yes				
Output over current protection	Yes				
Output over voltage protection	Yes				
Insulation resistance monitoring	Yes				
Residual current detection	Yes				
Surge protection	Yes				
Islanding protection	Yes				
temperature protection	Yes				
Integrated DC switch	Optional				
General Data					
Dimensins(mm)	270W*433H*105D (mm)				
Weight(kg)	5.2		5.6		
Topology	Transformerless				
Self consumption (night)	<1W(Night)				
Operating ambient temperature range	-25~60°C				
Ingress protection	IP65				
Noise emission{typical}	<30 dBA				
Cooling concept	Natural convection				
Max.operation altitude	4000m				
Designed lifetime	>20years				
Grid connection standard	EN50438, G83/2, AS4777, VDE0126-1-1, IEC61727				
Relative humidity	0~100%				
Safty/EMC standard	IEC62109-1/-2, AS3100, EN61000-6-1, EN61000-6-3				
Features					
DC connection	MC-4mateable				
AC connection	Ip67rated plug				
Display	LCD,2 × 20 Z.				
Communication connections	RS485, WiFi/GPRS(Optional)				
Warranty	5 years standard (extend to 20 years)				

2G

2.5KW
to 5KW

Solis 2G Single Phase Inverter

- ▶ Ultra wide input voltage range
- ▶ Compact and light design, easy installation
- ▶ IP65 rated for external installation
- ▶ RS485, WiFi/GPRS (optional) interface
- ▶ Numerous protection functions
- ▶ WiFi and monitoring app available
- ▶ 5 years standard warranty, 20 years optional upgrade



Model:

Solis-2.5K-2G-ST

Solis-3.6K-2G-ST

Solis-4.6K-2G

Solis-3K-2G-ST

Solis-3.6K-2G

Solis-5K-2G

Solis-3K-2G

Solis-4K-2G

Features:

Fanless

Cooling
Concept

Ultra wide

Voltage
Range

WiFi/GPRS

Real time
monitoring

Available on the iPhone
App Store

Available on the Android
App Store

IP65

Weight

12kg

Datasheet

Model	Solis-2.5K-2G	Solis-3K-2G-ST	Solis-3K-2G	Solis-3.6K-2G-ST	Solis-3.6K-2G	Solis-4K-2G	Solis-4.6K-2G	Solis-5K-2G
Energy Source	PV							
Input Side(DC)								
Max. DC input power(kW)	3	3.5	3.5	4.2	4.2	4.6	5.3	5.8
Max. DC input voltage(V)	600							
Start-up voltage(V)	120							
MPPT voltage range(V)	100-500							
Max. input current(A)	10A+10A	18A	10A+10A	18A	10A+10A	15A+15A	15A+15A	15A+15A
MPPT number/Max input strings number	2/2	1/2	2/2	1/2	2/2	2/2	2/2	2/2
Output Side (AC)								
Rated output power(kW)	2.5	3	3	3.6	3.6	4	4.6	5
Max. apparent output power(kVA)	2.8	3.3	3.3	4	4	4.4	5	5
Max. output power(kW)	2.8	3.3	3.3	4	4	4.4	5	5
Rated grid voltage(V)	230							
Grid voltage range(V)	180-270							
Rated grid frequency(Hz)	50/60							
Operation phase	Single							
Rated grid output current(A)	10.9	13	13	15.7	15.7	17.4	20	21.7
Max. output current(A)	13.3	15.7	15.7	16	16	21	23.8	23.8
Power Factor (at rated output power)	>0.99							
THDi (at rated output power)	<3%							
DC injection current(mA)	<20							
Grid frequency range(Hz)	47-52 or 57-62							
Efficiency								
Max. efficiency	97.5%				97.8%			
EU efficiency	96.8%				97.0%			
MPP Tefficiency	>99%							
Protection								
DC reverse-polarity protection	Yes							
Short circuit protection	Yes							
Output over current protection	Yes							
Output over voltage protection	Yes							
Insulation resistance monitoring	Yes							
Residual current detection	Yes							
Surge protection	Yes							
Islanding protection	Yes							
temperature protection	Yes							
Integrated DC switch	Optional							
General Data								
Dimensins(mm)	339W*565H*172.5D (mm)							
Weight(kg)	12	13.8				15.8		
Topology	Transformerless							
Self consumption (night)	<1W(Night)							
Operating ambient temperature range	-25~60℃							
Ingress protection	IP65							
Noise emission{typical}	<30 dBA							
Cooling concept	Natural convection							
Max.operation altitude	4000m							
Designed lifetime	>20years							
Grid connection standard	EN50438, G83/2 or G59/3, AS4777, VDE0126-1-1, IEC61727							
Relative humidity	0~100%							
Safty/EMC standard	IEC62109-1/-2, AS3100, EN61000-6-1, EN61000-6-3							
Features								
DC connection	MC-4mateable							
AC connection	Ip67rated plug							
Display	LCD,2×20 Z.							
Communication connections	4 pins RS485 connector							
Warranty	5 years standard (extend to 20 years)							

Three

6kW
-
15kW

Solis Three PV Inverter

- ▶ Three phase output
- ▶ Precise MPPT algorithm
- ▶ Compact and light design, easy installation
- ▶ IP65 rated for outdoor installation
- ▶ RS485, WiFi/GPRS (optional) interface
- ▶ WiFi and monitoring app available
- ▶ Numerous protection functions
- ▶ 5 years standard warranty, 20 years optional upgrade



Model:

Solis-6K

Solis-10K

Solis-15K

Features:

Fanless
Cooling
Concept

Ultra wide
Voltage
Range

WiFi/GPRS
Real time
monitoring

Available on the iPhone
App Store
Available on the Android
App Store

IP65

Weight
29kg

Datasheet

Model	Solis-6K	Solis-10K	Solis-15K
Energy Source	PV		
Input Side(DC)			
Max. DC input power(kW)	6.9	11.5	16.5
Max. DC input voltage(V)	1000		
Start-up voltage(V)	250		
MPPT voltage range(V)	200-800		
Max. input current(A)	15A+15A	18A+18A	18A+18A
MPPT number/Max input strings number	2/2	2/4	2/4
Output Side (AC)			
Rated output power(kW)	6	10	15
Max. apparent output power(kVA)	6.6	11	15
Max. output power(kW)	6.6	11	15
Rated grid voltage(V)	400		
Grid voltage range(V)	313-470		
Rated grid frequency(Hz)	50/60		
Operation phase	Three		
Rated grid output current(A)	8.7	14.4	21.7
Max. output current(A)	10	16.7	25
Power Factor (at rated output power)	0.8...1...0.8		
THDi (at rated output power)	<3%		
DC injection current(mA)	<20		<50
Grid frequency range(Hz)	47-52 or 57-62		
Efficiency			
Max. efficiency	98.2%		98.3%
EU efficiency	97.3%		97.5%
MPP Tefficiency	>99.5%		
Protection			
DC reverse-polarity protection	Yes		
Short circuit protection	Yes		
Output over current protection	Yes		
Output over voltage protection	Yes		
Insulation resistance monitoring	Yes		
Residual current detection	Yes		
Surge protection	Yes		
Islanding protection	Yes		
temperature protection	Yes		
Integrated DC switch	Optional		
General Data			
Dimensions(mm)	430W*613H*269D (mm)		
Weight(kg)	29		30
Topology	Transformerless		
Self consumption (night)	<1W(Night)		
Operating ambient temperature range	-25~60°C		
Ingress protection	IP65		
Noise emission{typical}	<30 dBA		
Cooling concept	Natural convection		
Max. operation altitude	4000m		
Designed lifetime	>20years		
Grid connection standard	EN50438, G59/3, AS4777, VDE0126-1-1, IEC61727		
Relative humidity	0~100%		
Safety/EMC standard	IEC62109-1/-2, AS3100, EN61000-6-1, EN61000-6-3,		
Features			
DC connection	MC-4mateable		
AC connection	Ip67rated plug		
Display	LCD,2×20 Z.		
Communication connections	4 pins RS485 connector		
Warranty	5 years standard (extend to 20 years)		

Three

20kW
-
40kW

Solis Three PV Inverter

- ▶ Three phase output
- ▶ Over 98.8% Max. efficiency
- ▶ 200V-1000V input voltage range
- ▶ 7.0" LCD color screen display
- ▶ Four MPPT design with precise MPPT algorithm
- ▶ Compact and light design, easy installation
- ▶ IP65 rated for outdoor installation
- ▶ RS485, WiFi/GPRS (optional) interface
- ▶ Anti-resonance, single transformer can connect 6M+ in parallel
- ▶ Multiple protection functions
- ▶ WiFi and monitoring app available
- ▶ 5 years standard warranty, 20 years optional upgrade



Model:

Solis-20K

Solis-25K

Solis-30K

Solis-33K

Solis-36K-HV

Solis-40K-HV

Features:

Fanless
Cooling
Concept

Four
MPPT

7"
LCD

WiFi/GPRS
Real time
monitoring

Available on the iPhone
App Store
Available on the iPhone
App Store

IP65

Datasheet

Model	Solis-20K	Solis-25K	Solis-30K	Solis-33K	Solis-36K-HV	Solis-40K-HV
Energy Source	PV					
Input Side(DC)						
Max. DC input power(kW)	23	28	34	36	41	48
Max. DC input voltage(V)	1000				1100	
Start-up voltage(V)	350					
MPPT voltage range(V)	200-800				200-1000	
Max. input current(A)	18A+18A+18A+18A					
MPPT number/Max input strings number	4/8					
Output Side (AC)						
Rated output power(kW)	20	25	30	33	36	40
Max. apparent output power(kVA)	22	27.5	33	33	40	44
Max. output power(kW)	22	27.5	33	33	40	44
Rated grid voltage(V)	400				480	
Grid voltage range(V)	304-460				384-576	
Rated grid frequency(Hz)	50/60					
Operation phase	Three					
Rated grid output current(A)	28.7	36.1	43.3	47.8	43.3	48.1
Max. output current(A)	33.3	41.7	50	50	47.8	53
Power Factor (at rated output power)	0.8...1...0.8					
THDi (at rated output power)	<3%					
DC injection current(mA)	<50					
Grid frequency range(Hz)	47-52 or 57-62					
Efficiency						
Max. efficiency	98.6%	98.6%	98.6%	98.7%	98.8%	98.8%
EU efficiency	98.3%/98.3%	98.3%/98.3%	98.3%/98.3%	98.3%/98.3%	98.4%/98.4%	98.4%/98.4%
MPPTefficiency	99.9%					
Protection						
DC reverse-polarity protection	Yes					
Short circuit protection	Yes					
Output over current protection	Yes					
Output over voltage protection	Yes					
Insulation resistance monitoring	Yes					
Residual current detection	Yes					
Surge protection	Yes					
Islanding protection	Yes					
temperature protection	Yes					
Integrated DC switch	Optional					
General Data						
Dimensions(mm)	530W*700H*356.5D (mm)					
Weight(kg)	57.2	58.2				
Topology	Transformerless					
Self consumption (night)	<1W(Night)					
Operating ambient temperature range	-25~60℃					
Ingress protection	IP65					
Noise emission{typical}	<30 dBA					
Cooling concept	Natural convection					
Max. operation altitude	4000m					
Designed lifetime	>20years					
Grid connection standard	EN50438, G59/3, AS4777, VDE0126-1-1, IEC61727					
Relative humidity	0~100%					
Safety/EMC standard	IEC62109-1/-2, AS3100, EN61000-6-1, EN61000-6-3					
Features						
DC connection	MC-4mateable					
AC connection	Terminal connectors					
Display	7.0"LCD color screen display					
Communication connections	4 pins RS485 connector , 2 RJ45 connector					
Warranty	5 years standard (extend to 20 years)					

Three

40kW
-
70kW

Solis Three PV Inverter

- ▶ Three phase output
- ▶ Max. efficiency 99%, EU efficiency 98.5%
- ▶ High precise, high speed MPPT algorithm
- ▶ Four MPPT input, each rated current is 28.5A, compatible with high power module
- ▶ Compact and light design for two-person easy installation
- ▶ IP65, visually pleasing for domestic environment
- ▶ THDi < 3%, low harmonic distortion against grid
- ▶ Anti-resonance, single transformer can connect 6M+ in parallel
- ▶ Perfect commercial site monitoring solution
- ▶ Intelligent redundant fan-cooling



Model:

Solis-40K

Solis-50K

Solis-50K -HV

Solis-60K-HV

Solis-70K-HV

Features:

Four

MPPT

Smart

Redundant
fan-cooling

WiFi/GPRS

Real time
monitoring

THDi

<3%

Available on the iPhone
App Store

Available on the iPhone
App Store

IP65

Datasheet

Model	Solis-40K	Solis-50K	Solis-50K-HV	Solis-60K-HV	Solis-70K-HV
Energy Source	PV				
Input Side(DC)					
Max. DC input power(kW)	48	55	60	72	77
Max. DC input voltage(V)	1100				
Start-up voltage(V)	200				
MPPT voltage range(V)	200-1000				
Max. input current(A)	22A+22A+22A+22A	28.5A+28.5A+28.5A+28.5A	22A+22A+22A+22A	28.5A+28.5A+28.5A+28.5A	
MPPT number/Max input strings number	4/8	4/12	4/8	4/12	
Output Side (AC)					
Rated output power(kW)	40	50	50	60	70
Max. apparent output power(kVA)	44	55	55	66	77
Max. output power(kW)	44	55	55	66	77
Rated grid voltage(V)	380/400	380/400	500	500	540
Grid voltage range(V)	304-460	304-460	384-576	384-576	400-648
Rated grid frequency(Hz)	50/60				
Operation phase	Three				
Rated grid output current(A)	58	72.2	57.7	69.3	74.8
Max. output current(A)	66.9	83.3	66.2	80	82.3
Power Factor (at rated output power)	0.8...1...0.8				
THDi (at rated output power)	<3%				
DC injection current(mA)	<50				
Grid frequency range(Hz)	47-52 or 57-62				
Efficiency					
Max. efficiency	98.8%	98.8%	99.0%	99.0%	99.0%
EU efficiency	98.4%/98.4%	98.4%/98.4%	98.5%/98.5%	98.5%/98.5%	98.5%/98.5%
MPP Tefficiency	99.9%				
Protection					
DC reverse-polarity protection	Yes				
Short circuit protection	Yes				
Output over current protection	Yes				
Output over voltage protection	Yes				
Insulation resistance monitoring	Yes				
Residual current detection	Yes				
Surge protection	Yes				
Islanding protection	Yes				
temperature protection	Yes				
Integrated DC switch	Optional				
General Data					
Dimensions(mm)	630W*700H*357D (mm)				
Weight(kg)	61	63	61	63	63
Topology	Transformerless				
Self consumption (night)	<1W(Night)				
Operating ambient temperature range	-25~60℃				
Ingress protection	IP65				
Noise emission{typical}	<30 dBA	<60 dBA	<30 dBA	<60 dBA	
Cooling concept	Natural convection	Intelligent redundant fan-cooling	Natural convection	Intelligent redundant fan-cooling	
Max. operation altitude	4000m				
Designed lifetime	>20years				
Grid connection standard	EN50438, G59/3, AS4777, VDE0126-1-1, IEC61727				
Relative humidity	0~100%				
Safety/EMC standard	IEC62109-1/-2, AS3100, EN61000-6-1, EN61000-6-3				
Features					
DC connection	MC-4mateable				
AC connection	OT Terminal connectors				
Display	LCD,2×20 Z.				
Communication connections	4 pins RS485 connector, 2 RJ45 connector, 2 group of terminal block				
Warranty	5 years standard (extend to 20 years)				

Energy Storage

3kW
-
5kW

HYBRID All NEW Solis Series

Hybrid Energy Storage Inverter

- ▶ All NEW Intelligent Hybrid PV Inverter
- ▶ Dual MPPT – 3K, 3.6K, 5K
- ▶ Off-grid backup function
- ▶ Export Control
- ▶ UPS function
- ▶ Intelligent EMS function
- ▶ Integrated BMS
- ▶ Smart battery SOC detection - Compatible with various 48V batteries
- ▶ Numerous protection functions
- ▶ CAN, RS485, WiFi/LAN/GRPS (Optional)
- ▶ 5 years standard warranty, 20 years optional upgrade



Model:

RHI-3K-48ES

RHI-3.6K-48ES

RHI-5K-48ES

Features:

Off-Grid
Backup

Flexible
adaptation
Lithium
battery

Smart
Energy
management

7"
LCD

WiFi/GPRS
Real time
monitoring

Available on the iPhone
App Store
Available on the Android
App Store

Datasheet

Model	RHI-3K-48ES	RHI-3.6K-48ES	RHI-5K-48ES
Energy Control	Intelligent Hybrid with Grid Backup		
Input DC(PV side)			
The max DC input voltage(V)	600		
Start-up DC voltage(V)	120		
MPPT operating voltage range(V)	90-520		
MPPT Number	2		
The rating max dc input current(A/B)	11A/11A		
Battery			
Battery Type	Li-ion		
Battery Voltage range(V)	42-58		
Battery Capacity(Ah)	50-2000		
Maximum Charging Power(W)	3000		
Maximum Charging/discharge current(A)	62.5		
Output AC(Back-up)			
Rating output power(kW)	3		
Transient max. apparent output power	4000kVA, 10sec		
Back-up switch time	<10ms		
Operation phase	L-N-PE		
Rating grid voltage(V)	220/230/240		
Rating grid frequency(Hz)	50/60		
Rating grid output current(A)	13		
THDi	2%(linear load)		
Output AC(Grid side)			
Rating output power(kW)	3	3.6	5 (4.6 for 4105)
Max. apparent power from grid(kVA)	5.5		
Operation phase	L-N-PE		
Rating grid voltage(V)	220/230/240		
The grid voltage range(V)	180~270		
Rating grid frequency(Hz)	50/60		
AC grid frequency range(Hz)	47-52 or 57-62		
Rating grid output current(A)	13	15.7	21.7
Output power factor	1 (default) and 0.8leading ... 0.8lagging adjustable		
THD	<2%		
Efficiency			
Max efficiency of Solar Inverting	>97.5%		
European efficiency of Solar Inverting	>96.8%		
Max efficiency of Battery Inverting	>95%		
Max efficiency of Battery charging	>95%		
Protection device			
Ground fault monitoring	Integrated		
Residual current monitoring unit	Integrated		
DC AFCI	Optional		
DC reverse polarity protection	Yes		
Protection class/Over voltage category	I/IV		
General Data			
Dimensions(W/H/D)	333*505*249(mm)		
Weight(kg)	17		
Operation temperature range	-25°C ~ 60°C		
Protection degree	IP65		
Inverter Topology	High frequency insulation (for battery)		
Noise emission (typical)	<20dBA		
Cooling concept	Natural convection		
Design lifetime	>20 years		
Safety/EMC standard	IEC62040-1, IEC62109-1/-2, AS3100, NB/T 32004, EN61000-6-1, EN61000-6-3		
AC and DC Connections	Quick Connection		
Interface	CAN/RS485/WiFi/GPRS (optional)		
Warranty	5 years standard (extend to 20 years)		

Monitoring System

DLS-W
DLS-G
DLS-L

Ginlong Monitoring System



Data Logging Stick
LAN

Data Logging Stick
WiFi/GPRS

Data Logging Stick LAN

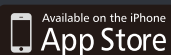
- ▶ Quick installation and easy operation
- ▶ Not need to set,plug and play function
- ▶ LAN communication is stable and reliable,remote monitoring

Data Logging Stick WiFi

- ▶ Quick installation and easy operation
- ▶ Enabling local and remote monitoring
- ▶ WiFi communication supporting remote monitoring
- ▶ Easy visualization of data and other information via Internet

Data Logging Stick GPRS

- ▶ Quick installation and easy operation
- ▶ Connecting inverters with 'plug and play'function
- ▶ Easy visualization of data and other information via mobile device
- ▶ GPRS communication enabling mobile monitoring anytime anywhere



Datasheet

Model	DLS-W	DLS-G	DLS-L
Max.number of inverters	1		
Inverter communication	4Pin		
Remote communication	WiFi (802.11 b/g/n)	GPRS Class 12	Ethernet 10/100Mbps
Communication rate	9600bps		1200-9600bps
Frequency	2.412GHz-2.484GHz	850/900/1800/1900 MHz	---
GPRS multi-slot	---	12/10/8	---
WiFi communication range	100m in outdoor open area without obstruction	---	---
LAN communication range	---	---	50m(CAT-5e Shielded Twisted Pair)
WiFi transmitting power	802.11b: +20dBm (Max) 802.11g: +18dBm (Max) 802.11n: +15dBm (Max) Configurable by users	---	---
WiFi receiving sensitivity	802.11b: -89dBm 802.11g: -81dBm 802.11n: -71dBm	---	---
GPRS Mobile Station	---	Class B	---
Compatible with the GSM Phase 2/2 +	---	Class 4 (2W @ 850/900 MHz) Class 1 (1W @ 1800/1900 MHz)	---
External antenna	I-PEX antenna	I-PEX connector	I-PEX antenna
Data collection intervals	5 minutes		
Data interface	UART: 9600bps	GPRS Class 12 Max 85.6kbps	UART: 9600bps
Preferences setting	Web Server		
Firmware updates	Wireless	Wireless	Ethernet
Data access	WiFi point-to-point/Remote server	Remote server	Remote server
Data storage	---	---	2MBYTE FLASH
Electrical			
Input voltage	DC 5V	DC 5V (+/-5%)	DC 5V (+/-5%)
Working current	130mA@5V	500mA	110mA~200mA
Static power consumption	---	<2W	---
Max. instantaneous power consumption	---	<8W	---
Environmental			
Operating temperature	-10°C~+85°C	-10°C~+85°C	-40°C~+85°C
Operating humidity	10%-90% Relative humidity, no condensa		
Storage temperature	-40°C~+125°C	-40°C~+125°C	-45°C~+90°C
Storage humidity	<40%		
Protection class	Ip65		
Physical			
Dimension(L*W*H)	118mm*43mm*43mm	118mm*43mm*43mm	105mm*43mm*43mm
Weight(g)	56g		
Other			
Warranty	2 years		
Certificates	FCC,CE		

Monitoring System

DLB-W
DLB-G

Ginlong Monitoring System



Data Logging Box WiFi

- ▶ Quick installation and easy operation
- ▶ Monitoring your system and data anytime via WiFi
- ▶ Easy visualization of data and other information via Internet
- ▶ Comprehensive analyzing system in case of any possible faults

Data Logging Box GPRS

- ▶ Quick installation and easy operation
- ▶ GPRS communication supporting remote monitoring
- ▶ Multi-functional protections keeping your system from faults
- ▶ Keeping users informed of status and data via mobile device



Datasheet

Model	DLB-W	DLB-G
Max. number of inverters	10	
Inverter communication	RS485	
Remote communication	WiFi (802. 11 b/g/n)/Ethernet	GPRS
Max. communication range	<1km	
Communication rate	9600bps(adjustable)	
WiFi frequency	2.4GHz	800/900/1800/1900MHz
WiFi communication range	300m in outdoor open area without obstruction	---
WiFi transmitting power	802. 11b/g/n:+20dBm/ +18dBm/15dBm (Max)	Class 4 (2W)/Class 1 (1W)
Data collect intervals	5 minutes	
Preferences setting	Web server/ Serial AT instruction	Serial AT instruction
Firmware updates	Serial/Wireless	
Data access	Serial/WiFi point-to-piont/Remote server	Serial/Remote server
Status display	4LEDs	
Electrical		
Input voltage	DC 5V	
Static power consumption	<1.6W	<2W
Max.instantaneous power consumption	<2.5W	<8W
Environmental		
Operating temperature	-10~+65℃	
Operating humidity	10%-90% Relative humidity, no condensa	
Storage temperature	-40~+85℃	
Storage humidity	<40%	
Protection class	IP21	
Physical		
Dimension(L*W*H)	110mm*86mm*26mm	
Weight(g)	108g	102g
Other		
Warranty	2 years	
Certificates	FCC, CE, RoHS	
Installation method	Wall mounted or horizontal	

Case study



Zhejiang Shepantu Fisheries-photovoltaic hybrid PV plant | 40MW



Zhejiang Longyou Agricultural-photovoltaic hybrid PV plant | 40MW



Quzhou Qinghu Agricultural-photovoltaic hybrid PV plant | 20MW



Hubei Guanyin Agricultural-photovoltaic hybrid PV plant | 20MW



Mexico City | 20MW



Anhui Jinzhai Agricultural-photovoltaic hybrid PV plant | 6MW



Inner Mongolia Khobqi Desert | 20MW



Zhejiang Hangbu Agricultural-photovoltaic hybrid PV plant | 30MW

Case study



Liaoning Yingkou Jiuzhai PV plant | 20MW



Zhejiang Dajie Agricultural-photovoltaic hybrid PV plant | 3MW



Huaneng Yimin surface mine PV plant | 20MW



Shanxi Guangling PV plant | 1.47MW



Inner Mongolia Khobqi Desert



Hunan Chenzhou Xingyi logistics city | 6MW



Shandong Qufu Confucius international commodity trade mall | 5.8MW



Hubei Luotian | 5.5MW

Case study



Shanghai Volkswagen Photovoltaic solar carport | 55MW



Ningbo NBMIP | 4.1MW



Beitun TXC | 300kW



Ningbo NHC | 530kW



Xiangshan Chang he Industrial Park | 2.2MW



Cixi Sunter | 520kW



Ningbo Plastic machinery manufacturing | 600kW



Ningbo Aerte | 500kW

Case study



Jiangxi Shicheng poverty alleviation PV Plant | 20MW



Shanxi Xiyang poverty alleviation PV Plant | 9.7MW



Xinjiang Alaer poverty alleviation PV Plant | 2MW



Jiangxi Ganzhou Hengjiang poverty alleviation PV Plant | 8.45MW



Shanxi Dazhang poverty alleviation PV Plant | 100kW



Shandong Leling poverty alleviation PV Plant | 50kW



Anhui Shijing poverty alleviation PV Plant | 80kW



Suzhou Dazhuang Healthcare Center | 575kW

Case study



Zhejiang largest photovoltaic building integrated village | 300kW



USA-Solarcity | 2MW

Case study



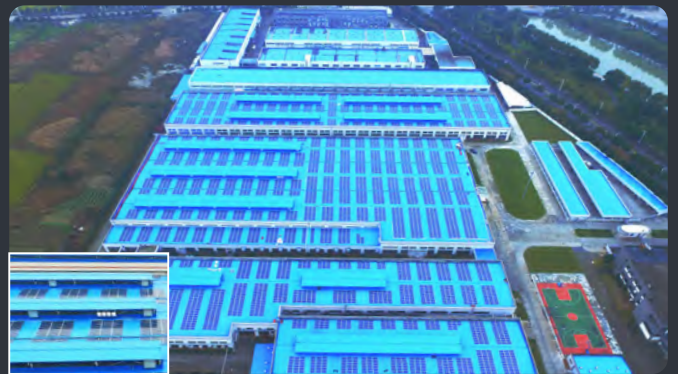
Shanghai General Motor | 5MW



Beilun HaiLun Pianos | 650kW



Cixi CW BEARING | 1.3MW



Yuyao NGGC | 1.7MW



Cixi FUDA | 1.9MW



Ningbo Yinzhou Jieyu | 1.6MW



Shanghai Bayer | 50kW



Baoding Hebei construction | 960kW

Case study



Sun-Earth | 3MW



Zhejiang Jiangshan Xintang Reservoir | 836kW



Zhejiang Ningbo Guantong | 1.5MW



Zhejiang Wugu | 1.64MW



Zhejiang Anboke | 1MW

Case study



Cixi CXSH | 450kW



Hangzhou ABON | 410kW



Henan Hayne pharmaceutical | 820kW



Lishui Greening | 750kW



Beilun Innolux | 6.5MW



Shandong Tianqu Logistics Trade City | 5.5MW



Yuyao JF | 1.8MW



Xiangshan HLGY | 300kW

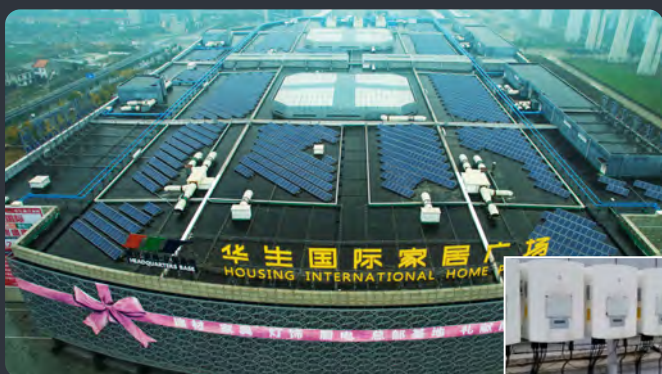
Case study



Shanghai World Expo | 10kW



Hangzhou Bay EGL | 600kW



Ningbo Housing International Home | 800kW



Yinzhou Loctek | 800kW



Xiangshan Ginlong Technologies | 309kW



Jiangbei Huashu | 705kW



Xiangshan QXPV | 1.0MW



Jiaying Nanhu service area | 250kW

Case study



JiixinChanger | 5MW



Hangzhou Bay Geely | 5.6MW



Zhejiang HANVOS | 2.1MW



Hunan Yantouzhai Primary school | 15kW



Gansu Bola Primary school | 15kW

Case study



India RSWM | 3.6MW



India TTD | 10MW



Guadalajara DEPSA | 3.4MW



Barbados | 25kW



PanamaUGE Cochez | 3.4MW



Minas Gerais Araguari | 54kW



Georgia-Boviet Woodland | 1.6MW



Mexico-Tamaulipas Carport | 5MW

Case study



UK ABP Ipswich | 1MW



Kansas | 25kW



Sweden Vallentuna | 100kW



UK Stockley Park | 110kW



United States Postal Service (USPS) LA P&DC Facility | 12MW



Mexico | 200kW



Philippines Calamba Doctors Hospital | 120kW



Dominicana Santo Domingo | 34kW



Ginlong Technologies Co.,Ltd

Address: No.57 Jintong Road,
Binhai Industrial Park,
Xiangshan, Ningbo, Zhejiang, 315712
Tel: (+86) 574 6580 2188
Fax: (+86) 574 6578 1606
E-mail: sales@ginlong.com
Website: www.ginlong.com



Ginlong UK Office

Address: Ginlong UK- Mill 2 Thornhillbeck
Lane, Huddersfield, HD6 4AL
Tel: +44 (0)113 328 0870
E-mail: uksales@ginlong.com



Europe Service Center

Address: Calle benimarfull 7, 03560
El Campello, Spain
E-mail: uksales@ginlong.com
Tel: (+34) 662379760



solis australasia pty ltd

Address: 5/ 109 Tulip Street Cheltenham,
Victoria, 3192 Australia
Tel: +61 (0)3 8555 9516
E-mail: service@ginlongaust.com.au



Ginlong US Office

Address: 565 Metro Pl. S. Suite 3214,
Dublin OH 43017, USA
Toll-free: 866.438.8408
E-mail: sales@ginlong-usa.com